

# NORITAKE/HARADA

5 POCKET RIVETED JEANS, LOOMSTATE DENIM

## SIZE SPECIFICATION BEFORE WASH (Centimeter)

BELT LOOPS		5					5										7									
FLY BUTTONS		2					4										5					6				
CUTTINGS		BOYS					REGULAR										EXTRA									
SIZE	MEASUREMENT	26	27	28	29	30	31	32	33	34	35	36	38	40	42	44	46	48	50	52	54	56	58			
WAIST *A	centimeter	71.1cm	73.6cm	76.2cm	78.7cm	80cm	82.5cm	85cm	87.6cm	90.1cm	92.7cm	95.25cm	100.3cm	105.4cm	110.5cm	116cm	120.6cm	125.7cm	130.8cm	137cm	142.2cm	147.3cm	152.4cm			
FRONT RISE *B	centimeter	25.3cm	25.7cm	26.1cm	26.25cm	28.8cm	29.2cm	29.6cm	30cm	30.4cm	30.8cm	31.2cm	31.6cm	32.4cm	33.2cm	36.7cm	37.5cm	38.3cm	39.1cm	39.9cm	40.7cm	41.5cm	42.3cm			
LEG OPENING *C+D/2	centimeter	18.6cm	19cm	19.4cm	19.8cm	20.2cm	20.6cm	21cm	21.4cm	21.8cm	22.2cm	22.6cm	23.4cm	24.2cm	25cm	25.8cm	26.6cm	27.4cm	28.2cm	29cm	29.8cm	30.6cm	31.4cm			
INSEAM *E X-SHORT	centimeter	61cm	61cm	61cm	61cm	61cm	61cm	61cm	61cm	61cm	61cm	61cm	61cm	61cm	61cm	61cm	61cm	61cm	61cm	61cm	61cm	61cm	61cm			
INSEAM *E SHORT	centimeter	71cm	71cm	71cm	71cm	71cm	71cm	71cm	71cm	71cm	71cm	71cm	71cm	71cm	71cm	71cm	71cm	71cm	71cm	71cm	71cm	71cm	71cm			
INSEAM *E MEDIUM	centimeter	81cm	81cm	81cm	81cm	81cm	81cm	81cm	81cm	81cm	81cm	81cm	81cm	81cm	81cm	81cm	81cm	81cm	81cm	81cm	81cm	81cm	81cm			
INSEAM *E LONG	centimeter	91cm	91cm	91cm	91cm	91cm	91cm	91cm	91cm	91cm	91cm	91cm	91cm	91cm	91cm	91cm	91cm	91cm	91cm	91cm	91cm	91cm	91cm			
INSEAM *E X-LONG	centimeter	101cm	101cm	101cm	101cm	101cm	101cm	101cm	101cm	101cm	101cm	101cm	101cm	101cm	101cm	101cm	101cm	101cm	101cm	101cm	101cm	101cm	101cm			

## SIZE SPECIFICATION BEFORE WASH (Inch)

BELT LOOPS		5					5										7									
FLY BUTTONS		2					4										5					6				
CUTTINGS		BOYS					REGULAR										EXTRA									
SIZE	MEASUREMENT	26	27	28	29	30	31	32	33	34	35	36	38	40	42	44	46	48	50	52	54	56	58			
WAIST *A	inch	28"	29"	30"	31"	31.5"	32.5"	33.5"	34.5"	35.5"	36.5"	37.5"	39.5"	41.5"	43.5"	45.5"	47.5"	49.5"	51.5"	54"	56"	58"	60"			
FRONT RISE *B	inch	10"	10.15"	10.3"	10.45"	11.4"	11.55"	11.7"	11.85"	12"	12.15"	12.3"	12.6"	12.9"	13.2"	14.5"	14.8"	15.1"	15.4"	15.7"	16"	16.3"	16.6"			
LEG OPENING *C+D/2	inch	7.3"	7.46"	7.62"	7.78"	7.94"	8.1"	8.26"	8.42"	8.58"	8.74"	8.9"	9.22"	9.54"	9.86"	10.02"	10.34"	10.66"	10.98"	11.3"	11.62"	11.94"	12.26"			
INSEAM *E X-SHORT	inch	24"	24"	24"	24"	24"	24"	24"	24"	24"	24"	24"	24"	24"	24"	24"	24"	24"	24"	24"	24"	24"	24"			
INSEAM *E SHORT	inch	28"	28"	28"	28"	28"	28"	28"	28"	28"	28"	28"	28"	28"	28"	28"	28"	28"	28"	28"	28"	28"	28"			
INSEAM *E MEDIUM	inch	32"	32"	32"	32"	32"	32"	32"	32"	32"	32"	32"	32"	32"	32"	32"	32"	32"	32"	32"	32"	32"	32"			
INSEAM *E LONG	inch	36"	36"	36"	36"	36"	36"	36"	36"	36"	36"	36"	36"	36"	36"	36"	36"	36"	36"	36"	36"	36"	36"			
INSEAM *E X-LONG	inch	40"	40"	40"	40"	40"	40"	40"	40"	40"	40"	40"	40"	40"	40"	40"	40"	40"	40"	40"	40"	40"	40"			

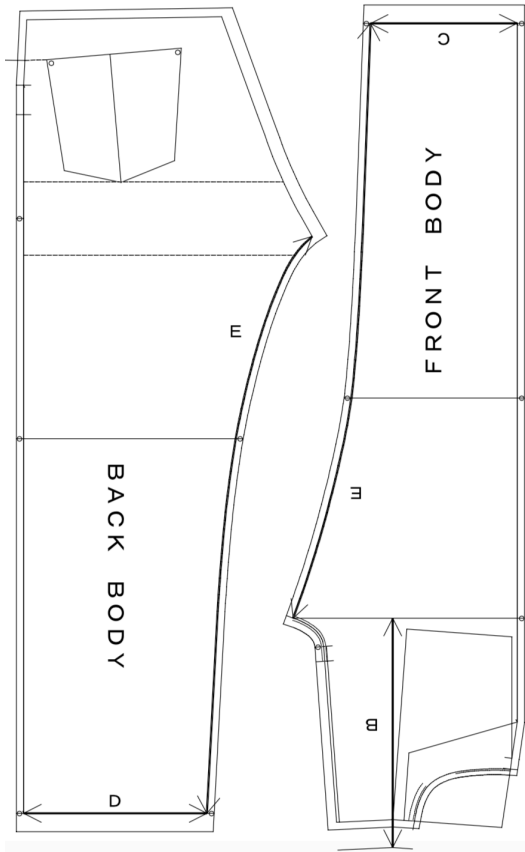
## SIZE MEASUREMENTS AND SHRINKAGE OVERVIEW

All materials are RAW or LOOMSTATE

Shrinkage approximately vertical 8%, horizontal 5%

NOTE: Shrinkage may vary according to washing conditions

☐ ✂ ✂ ✂ ✂ PLEASE SEE CARE INSTRUCTIONS INSIDE GARMENT



### APPROXIMATE SHRINKAGE

*WAIST BAND	A	*8%
FRONT RISE	B	8%
LEG OPENING	C+D/2	5%
INSEAM	E	8%

\*Will also stretch in the WAIST up to 3% after many wears

# NORITAKE/HARADA

1 POCKET PLEATED WORK JACKET, LOOMSTATE DENIM

## SIZE SPECIFICATION BEFORE WASH (Centimeter)

FRONT BUTTONS		5					5					5				
BACK BODY		PLAIN					PLAIN					SEPARATE				
CUTTINGS		BOYS					REGULAR					EXTRA				
SIZE	MEASUREMENT	30	32	34	36	38	40	42	44	46	50	54	58			
CHEST *A	centimeter	47.3cm	49.8cm	52.3cm	54.8cm	57.3cm	59.8cm	62.3cm	64.8cm	67.3cm	72.3cm	77.3cm	82.3cm			
SHOULDER *B	centimeter	40.9cm	42.4cm	43.9cm	45.4cm	47.4cm	49.4cm	51.4cm	53.4cm	55.9cm	60.9cm	65.9cm	70.9cm			
SLEEVE LENGTH *C	centimeter	54.6cm	55.8cm	57cm	63cm	63.6cm	64.2cm	64.8cm	65.4cm	62cm	63.2cm	64.4cm	65.6cm			
BODY LENGTH *D	centimeter	54.9cm	56.1cm	57.3cm	58.5cm	59.7cm	60.9cm	62.1cm	63.3cm	64.5cm	66.9cm	69.3cm	71.7cm			

## SIZE SPECIFICATION BEFORE WASH (Inch)

FRONT BUTTONS		5					5					5				
BACK BODY		PLAIN					PLAIN					SEPARATE				
CUTTINGS		BOYS					REGULAR					EXTRA				
SIZE	MEASUREMENT	30	32	34	36	38	40	42	44	46	50	54	58			
CHEST *A	inch	18.5"	19.5"	20.5"	21.5"	22.5"	23.5"	24.5"	25.5"	26.5"	28.5"	30.5"	32.5"			
SHOULDER *B	inch	16"	16.7"	17.3"	17.9"	18.6"	19.4"	20.2"	21"	22"	24"	26"	28"			
SLEEVE LENGTH *C	inch	21.5"	22"	22.5"	24.8"	25"	25.3"	25.5"	25.8"	24.4"	24.9"	25.4"	25.8"			
BODY LENGTH *D	inch	21.6"	22"	22.5"	23"	23.5"	24"	24.5"	25"	25.4"	26.3"	27.3"	28.2"			

## SIZE MEASUREMENTS AND SHRINKAGE OVERVIEW

All materials are RAW or LOOMSTATE

Shrinkage approximately vertical 8 %, horizontal 5%

NOTE: Shrinkage may vary according to washing conditions

☞ ☜ ☞ ☜ ☞ ☜ PLEASE SEE CARE INSTRUCTIONS INSIDE GARMENT

		APPROXIMATE SHRINKAGE
CHEST	A	5%
SHOULDER	B	5%
SLEEVE LENGTH	C	8%
BODY LENGTH	D	8%

